

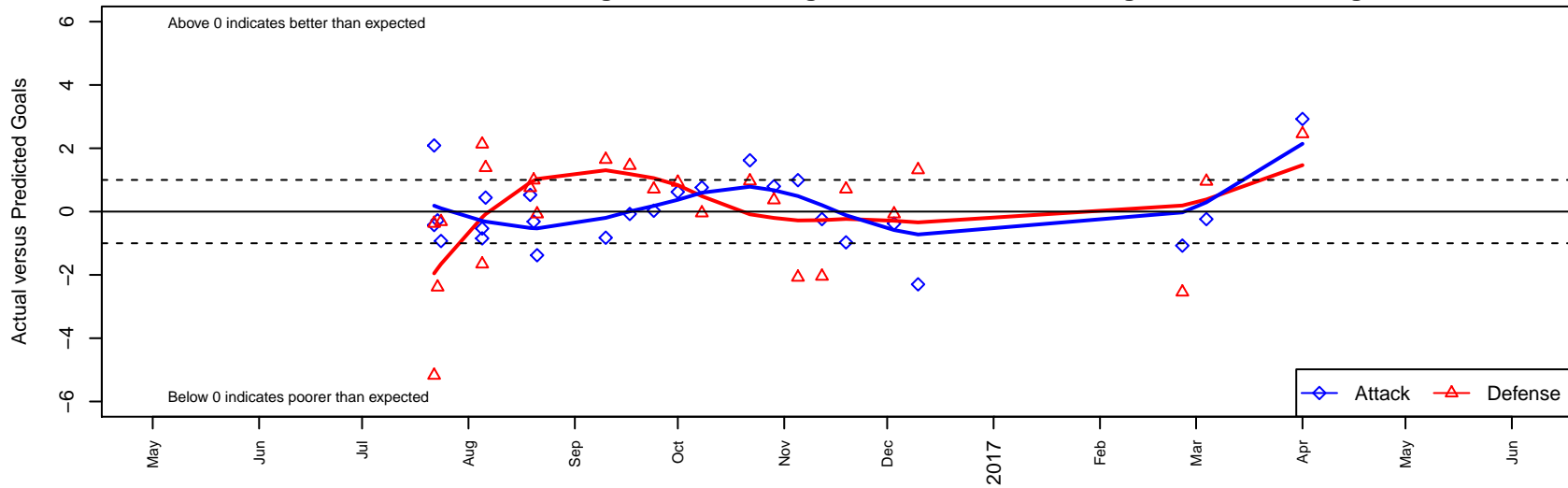
PSA Force Black B04

Pilchuck Soccer Alliance
 Marysville, WA
 B04 total strength=540
 attack=0.52 defense=0.32
 fall league = NPSL Div 3 (04) U13
 spr league = Spr NPSL (04) Div 3 U13
 notes= Hall 2015; Mizell 2016

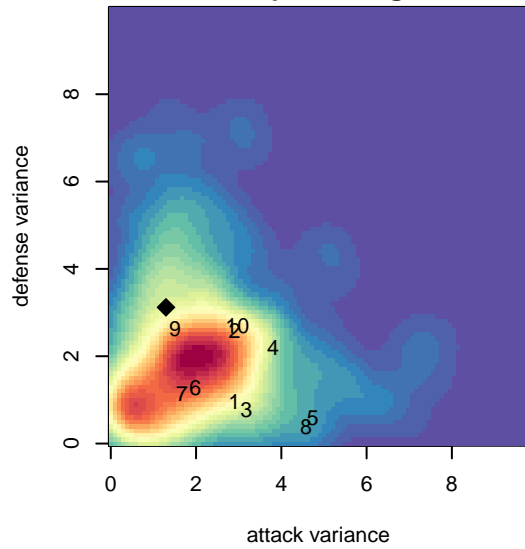
alt names used:
 PILCHUCK SOCCER ALLIANCE – FORCE B0
 PSA B04 Force– Mizell
 PSA B04 Force_Mizell
 PILCHUCK SOCCER ALLIANCE – FORCE B0
 PSA B04 Force_Mizell

Venues played:
 2016 Crossfire Select U13 Bronze
 2016 WA Rush Cup B04 Silver U13
 2016 Bigfoot Silver U13
 2016 NPSL Division 3 (04) U13
 2016 Spr NPSL (04) Division 3 U13

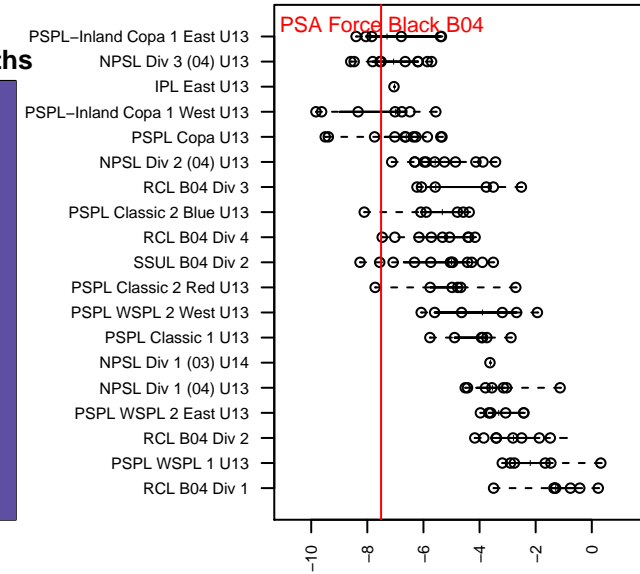
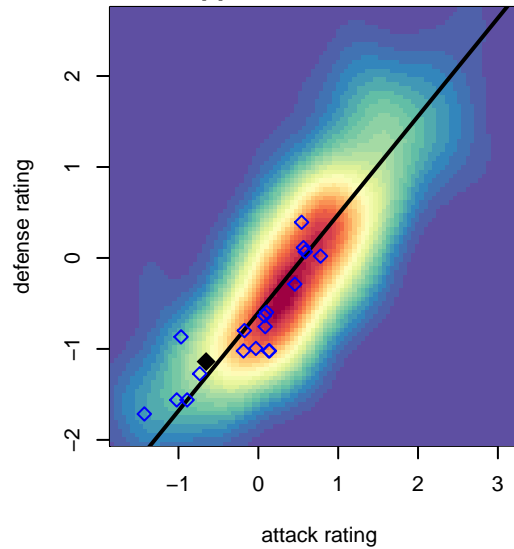
PSA Force Black B04
 Dots are actual minus expected GF (blue circles) and GA (red triangles).
 Blue line is smoothed change in attack strength. Red is smoothed change in defense strength.



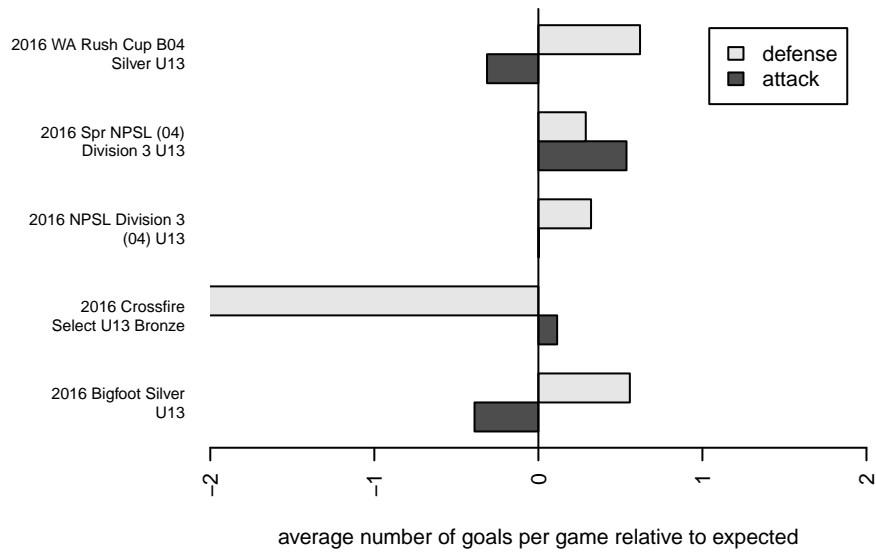
**attack and defense variance (black dot)
relative to other teams
and top 10 in region**



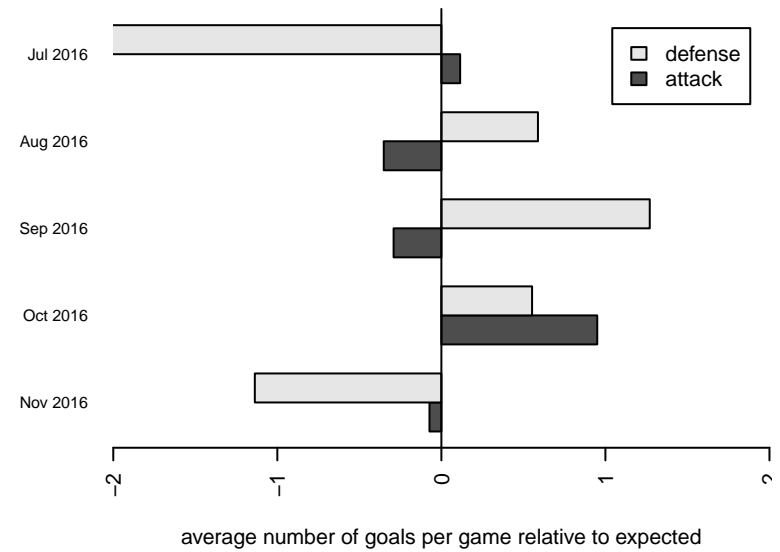
**attack and defense rating
relative to others at age
and all opponents in last 13 months**



Performance relative to 13 month average



Performance relative to 13 month average



date	home		away		venue	pred.home	pred.away
2017-04-01	PSA Force Black B04	4	NW United White B04	1	2016 Spr NPSL (04) Division 3 U13	1.08	3.46
2017-03-04	Whatcom Rangers White B04	2	PSA Force Black B04	1	2016 Spr NPSL (04) Division 3 U13	2.96	1.24
2017-02-25	NW United White B04	6	PSA Force Black B04	0	2016 Spr NPSL (04) Division 3 U13	3.46	1.08
2016-12-10	IFC Red B04	0	PSA Force Black B04	0	2016 NPSL Division 3 (04) U13	1.32	2.30
2016-12-03	Seattle United W White B04	4	PSA Force Black B04	1	2016 NPSL Division 3 (04) U13	3.92	1.38
2016-11-19	PSA Force Black B04	0	Bellevue United Select B04	3	2016 NPSL Division 3 (04) U13	0.97	3.71
2016-11-12	PSA Force Black B04	1	Whatcom Rangers White B04	5	2016 NPSL Division 3 (04) U13	1.24	2.96
2016-11-05	FME Xtreme B04	6	PSA Force Black B04	2	2016 NPSL Division 3 (04) U13	3.92	1.01
2016-10-29	PSA Force Black B04	2	Mercer Island FC Maroon B04	1	2016 NPSL Division 3 (04) U13	1.20	1.37
2016-10-22	BIFC White B04	0	PSA Force Black B04	4	2016 NPSL Division 3 (04) U13	0.96	2.38
2016-10-08	Whatcom Rangers White B04	3	PSA Force Black B04	2	2016 NPSL Division 3 (04) U13	2.96	1.24
2016-10-01	PSA Force Black B04	2	Seattle United W White B04	3	2016 NPSL Division 3 (04) U13	1.38	3.92
2016-09-24	Bellevue United Select B04	3	PSA Force Black B04	1	2016 NPSL Division 3 (04) U13	3.71	0.97
2016-09-17	PSA Force Black B04	1	NW United White B04	2	2016 NPSL Division 3 (04) U13	1.08	3.46
2016-09-10	NSC Voltage Black B04	0	PSA Force Black B04	1	2016 NPSL Division 3 (04) U13	1.65	1.83
2016-08-21	Seattle United W White B04	4	PSA Force Black B04	0	2016 Bigfoot Silver U13	3.92	1.38
2016-08-20	Seattle United W Blue B04	5	PSA Force Black B04	0	2016 Bigfoot Silver U13	5.99	0.32
2016-08-19	Emerald City FC White B04	5	PSA Force Black B04	1	2016 Bigfoot Silver U13	5.75	0.47
2016-08-06	PacNW Blue B04	5	PSA Force Black B04	1	2016 WA Rush Cup B04 Silver U13	6.39	0.56
2016-08-05	Wenatchee FC Black B04	3	PSA Force Black B04	0	2016 WA Rush Cup B04 Silver U13	5.13	0.53
2016-08-05	ISC Gunners B B04	7	PSA Force Black B04	0	2016 WA Rush Cup B04 Silver U13	5.34	0.85
2016-07-24	Cascade FC White B04	1	PSA Force Black B04	2	2016 Crossfire Select U13 Bronze	0.68	2.93
2016-07-23	PSA Force Black B04	1	Crossfire Select Atkinson B04	5	2016 Crossfire Select U13 Bronze	1.28	2.61
2016-07-22	Seattle Celtic Orange B04	4	PSA Force Black B04	1	2016 Crossfire Select U13 Bronze	3.63	1.42
2016-07-22	PSA Force Black B04	3	NSC Spartans Black B04	9	2016 Crossfire Select U13 Bronze	0.91	3.83